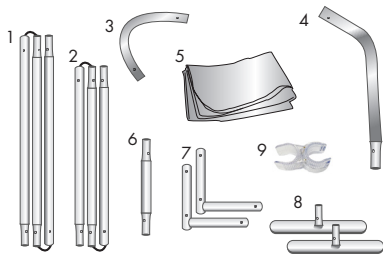


Eurofit Incline

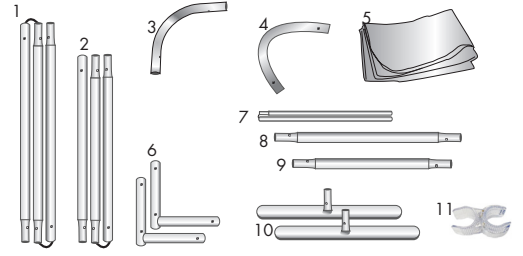
Product Parts 2FT Incline

- 1 - 3pc Left Pole
- 2 - 3pc Right Pole
- 3 - Top Left Corner Pole
- 4 - Top Right Curved pole
- 5 - Graphic
- 6 - Bottom Center Pole
- 7 - 90° Bottom Corners (x2)
- 8 - Feet (x2)
- 9 - Plastic Hinge Connector



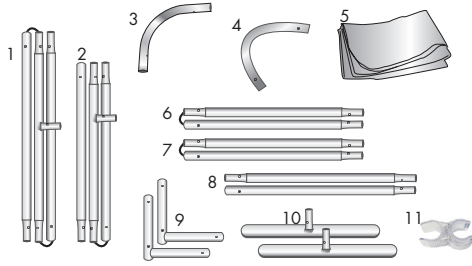
Product Parts 3FT Incline

- 1 - 3pc Left Pole
- 2 - 3pc Right Pole
- 3 - Top Right Corner Pole
- 4 - Top Left Corner Pole
- 5 - Graphic
- 6 - 90° Bottom Corners (x2)
- 7 - 2pc Middle Center Pole
- 8 - Top Center Pole
- 9 - Bottom Center Pole
- 10 - Feet (x2)
- 11 - Plastic Hinge Connector



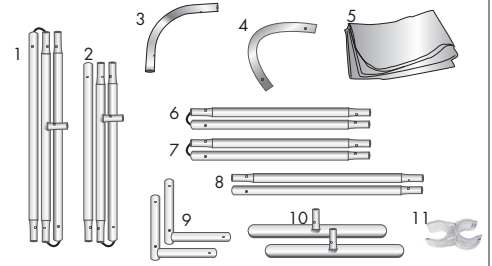
Product Parts 4FT Incline

- 1 - 3pc Left Pole
- 2 - 3pc Right Pole
- 3 - Top Right Corner Pole
- 4 - Top Left Curved pole
- 5 - Graphic
- 6 - 2pc Top Center Pole
- 7 - 2pc Bottom Center Pole
- 8 - Horizontal Center Pole (x2)
- 9 - 90° Bottom Corners (x2)
- 10 - Feet (x2)
- 11 - Plastic Hinge Connector



Product Parts 5FT Incline

- 1 - 3pc Left Pole
- 2 - 3pc Right Pole
- 3 - Top Right Corner Pole
- 4 - Top Left Curved pole
- 5 - Graphic
- 6 - 2pc Top Center Pole
- 7 - 2pc Bottom Center Pole
- 8 - Horizontal Center Pole (x2)
- 9 - 90° Bottom Corners (x2)
- 10 - Feet (x2)
- 11 - Plastic Hinge Connector



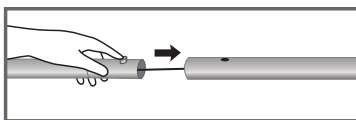
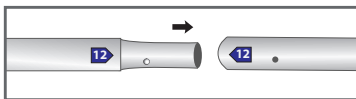
Display Set-Up

Step 1

Begin by removing all parts from the carry case and place on a clean, flat surface. Ensure you have all the components listed above.

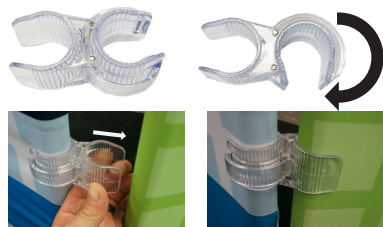
Step 2

Assemble all the poles by connecting the corresponding numbers together while pressing the snap button as shown.



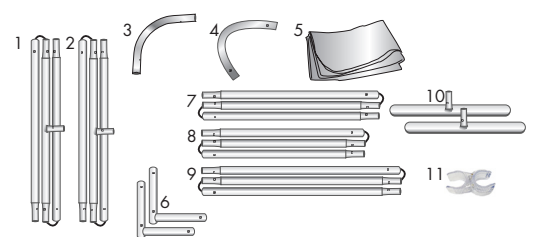
Plastic Hinge Connector

Used to connect all Eurofit Displays with 1.25" Diameter Poles.



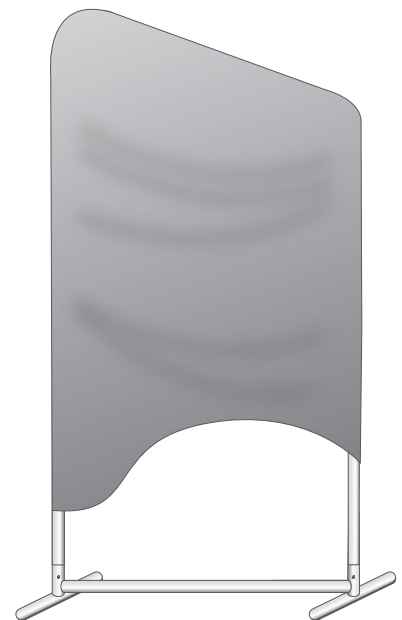
Product Parts 8FT Incline

- 1 - 3pc Top pole
- 2 - 3pc Bottom Pole
- 3 - Top Right Corner Pole
- 4 - Top Left Corner Pole
- 5 - Graphic
- 6 - 90° Bottom Corners (x2)
- 7 - 3pc Left Pole
- 8 - 3pc Right Pole
- 9 - 3pc Middle Vertical Pole
- 10 - Feet (x2)
- 11 - Plastic Hinge Connector



Step 3

Drape the Graphic (5) over the hardware until it reaches the feet.



Storage & Care

Place all product parts into Carry Case and store in a cool dry location. Recommended for indoor use only. Machine wash on gentle cycle using mild detergent. Tumble Dry No Heat. Do NOT dry clean, Do NOT Iron.